



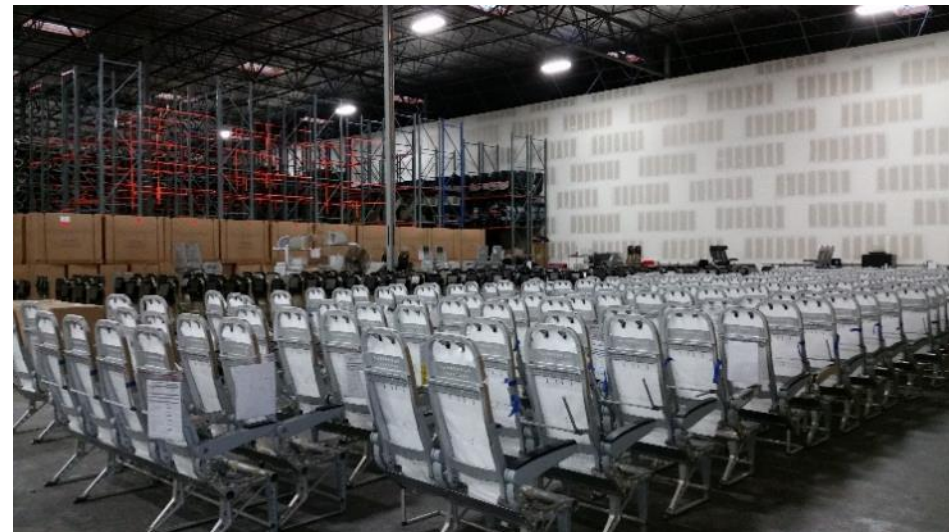
FLIGHT LINE PRODUCTS

A WENCOR GROUP Company

# Flight Line Products Overview

## Complete Seat Solution:

- Large secondary seat inventory
- In house capability to produce spares
- In house refurbishment & modification
- In house test validation
- 16G and HIC Testing Capability
- Engineering & certification capabilities
- FAA DER & EASA DOA Services
- FAA - EASA STC & field approval
- Global presence (USA, Amsterdam, China)
- More cost effective than OEM or Integrator
- Reduced program schedules
- Rotable spares programs
- Major provider of seats to AERCAP



## A320 Business Class:

Recaro 4400 (Leg rest is removable)  
X-Gulf Air - Over 100 PAX in Stock



BE Aerospace Infinity  
X-Gulf Air - 24 PAX in Stock



## A320 Economy Class:

Weber 5600's (1 Ship set)  
180 PAX Configuration



Weber AI-1000 (1 Ship set)  
180 PAX Configuration



Recaro 3510 (3 Ship sets)  
180 PAX Configuration



## 737NG Business Class:

Recaro 4400  
X-Airtran – 100+ PAX in Stock



BE Aerospace Spectrum  
X-Alaska – 100+ PAX in Stock



BE Aerospace Millennium  
X-Alaska – 100+ PAX in Stock



## 737NG Economy Class:

Recaro 3510 (30+ Ship sets)  
144-189 PAX Configuration



BE Spectrum (20+ Ship sets)  
144-189 PAX Configuration



BE Innovator II (20+ Ship sets)  
144-189 PAX Configuration



## A330/340 Business Class:

Recaro 4420  
X-SAS – 100+ PAX in Stock



Recaro 6510  
X-Lufthansa – (4 Ship sets)



Contour  
X-Air France – (4 Ship sets)



## A330/340 Economy Class:

Recaro 3510 - 220 PAX Configuration  
Ex-LHT (2 Ship sets)



Recaro 3510  
Ex - Edelweiss (6 Ship sets)



BE 985  
Ex – Cathay Pacific (10 Ship sets)



## 767 Business Class:

Weber 7070 (Legrest is removable) Ex-Hawaiian



BE Aerospace Millennium  
Ex American - 64 PAX in Stock

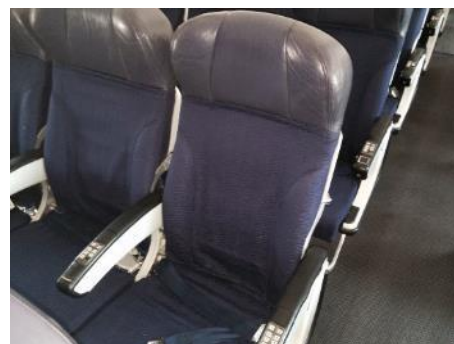


## 767 Economy Class:

Weber 5700's  
Ex-Hawaiian (1 Ship set)



Brice B1000  
Ex-Hawaiian (2 Shipsets)



Weber 5150 269 PAX Configuration  
(1 Ship set)

